

ES

Embroidery Software 2006

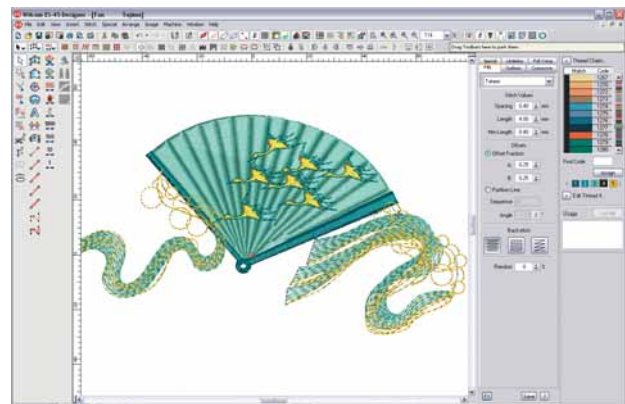
45 – Creative Digitizing

Creative Flare, High Fashion, Inspiration

Advanced stitch effects such as *Florentine Effect*, *3D Warp*, *Trapunto* and *Stipple Stitch* will bring your embroidery to life. *Smart Branching* sequences your embroidery design, eliminating trims, while *Offset Object* will automatically create borders around design objects.

Boasting a blend of powerful digitizing tools and creative stitch effects, Wilcom ES Level 45 is Wilcom's most popular embroidery digitizing system.

Wilcom ES Level 45 gives you the competitive edge by enabling you to create superior embroidery designs faster and easier than before.



Intelligent vector file support

Wilcom ES Level 45 allows for the import of vector files such as EMF and EPS. Convert vector files to embroidery using Wilcom's legendary *Point & Stitch*™ technology. Equally, export existing embroidery designs to vector files for use in screen printing and layout design.

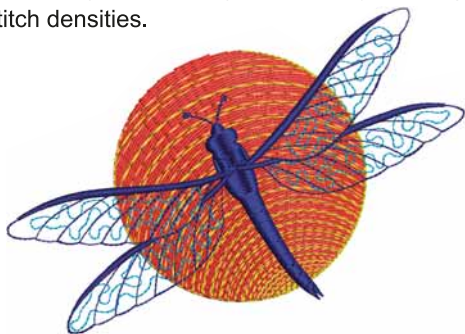
Alternatively, copy and paste your files between popular design packages such as CoreIDRAW® and Adobe Illustrator®, providing instant export-free conversion between embroidery and vector files.



Creative stitch effects

Choose from dozens of stitch and creative effects. Automatically curve tatami stitching using *Florentine* and *Liquid Effect*. This offers a curved-stitching alternative to straight Tatami, while *Stipple Fill* is perfect for a creative all-over cover without a thick stitch density.

Avoid unsightly travel runs in open Tatami stitching using *Trapunto* effect. *Trapunto* forces the travel runs of your Complex Fill object to the object boundary allowing for open stitch densities.



Curved Tatami fill

Turn straight, boring Tatami into a creative fill using *Florentine* and *Liquid Effect*. Mark curve lines to create a flowing stitch effect. *Florentine* and *Liquid Effect* are perfect for wood grain, sunsets, and natural stitching effects.

Offset Object automatic borders

ES 2006 takes automatic borders to a new level. The improved *Offset Object* tool lets you quickly create new outlines around existing objects. Any closed shape can be used, including lettering, vector objects and runs. The generated outline is an independent object that can be reshaped and modified as required. Choose *Spiral* for a continual line offset, or create fixed offsets at any distance you specify.

Alternatively, use *Input C* to create manual border stitches of constant thickness. Select from Mitre or Capped corners to enhance the design.



Smart branching

Save valuable editing time by using Wilcom's automatic sequence tool, *Branching*. *Branching* is even smarter in Wilcom ES 2006, and remembers all object settings such as stitch type, underlay and pull compensation.

Select a group of objects of the same color. By applying *Branching*, ES will automatically sequence the objects, creating travel runs to avoid trims. This otherwise manual procedure is done in a matter of seconds, and can save you expensive machine time by avoiding unnecessary trims.



Design contains many time-wasting trims.



Design automatically sequenced with Branching.

HEAD OFFICE

Wilcom International Pty Ltd – Head Office
146 Wyndham Street,
Alexandria NSW 2015 AUSTRALIA
Tel: 61 2 9578 5100
Fax: 61 2 9578 5108
Email: wilcom@wilcom.com.au

Americas

Wilcom America Inc
Tel: + 1 770-409-9503
Sales Toll-free: 1 877 657 7500
Fax: + 1 770-409-9545
Email: sales@wilcomamerica.com

Europe

Wilcom Europe LTD
Tel: 44 (0) 1246 455 667
Fax: 44 (0) 1246 455 166
Email: wilcom@wilcom.co.uk

For your closest Wilcom distributor visit www.wilcom.com.au
Support: www.wilcom.com.au/support/

