

# ES

## Embroidery Software 2006

### 21L – Lettering

#### Automatic kerning

Apply automatic *Kerning* to existing Wilcom fonts or to your own custom alphabets. Adjust the kerning space between letters to your own preferences, and update Wilcom ES' intelligent *Kerning Table*. Your new kerning values are saved forever, eliminating hours of future lettering and editing time.

When people think of quality lettering, they think of Wilcom.

For over 25 years, Wilcom has had the reputation of producing the industry's most powerful and highest quality professional embroidery lettering software.

- Empower your business with the flexibility and reliability of in-house lettering.
- Avail yourself of over 130 professionally digitized embroidery alphabets.
- Utilize the endless supply of Windows fonts with Wilcom's turning satin TrueType Font converter.

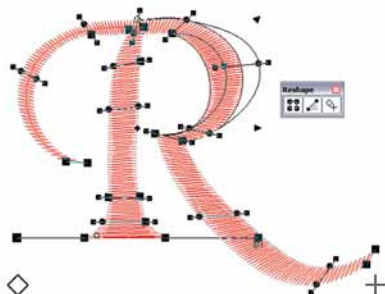
Combined with professional Colorway and stitch-processing technology, Wilcom ES Level 21L provides for all your embroidery lettering needs.



## Powerful reshaping

Wilcom ES' object-based lettering is fast, reliable, and easy-to-control.

Powerful reshaping tools allow for total customization of your lettering jobs, and with Wilcom's new User Refined Alphabet, your reshapes can be recorded and automatically applied next time!



A size range can be applied to your unique reshape, capturing the stitching effect you want at the height you desire. Multiple shapes can be created and saved for a single letter at different size ranges. Then the system will automatically choose the correct shape when you set the size of your lettering. So whatever height your lettering is, it will always sew exactly as you want.

## Closest join every time

All Wilcom alphabets can sew closest join, eliminating unsightly and costly trims. Wilcom ES will also automatically re-sequence your own custom alphabets!

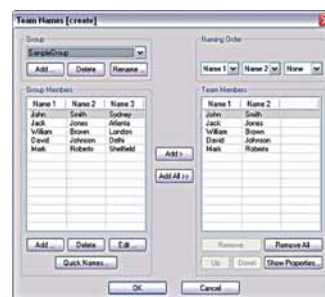
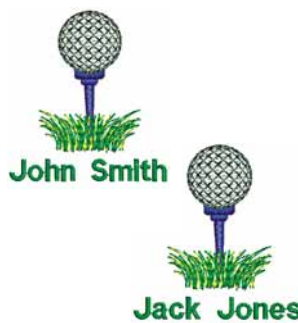


Center-out lettering is essential for caps to prevent unnecessary movement and ensure stitching quality. Wilcom's automatic center-out option ensures correct sequencing for caps, and can be applied to your own custom alphabets. Center-out sequence also maintains time-saving closest-join connectors.

## Be a team leader!

Placing a name beneath a logo or design is common for sports or corporate apparel. Single names are easy to handle, but larger orders of 20 names or more can be a real headache!

Simplify and automate the process with Wilcom ES' *Team Name*.



Names are entered into the *Team Names Create* list and permanently saved with the original design file.

Once you are ready to sew the design, select from five different export options and Wilcom ES will automatically create the design with Team Name lettering for you.

You can even import the names from a pre-typed list supplied by your customer, to ensure costly spelling mistakes are avoided.

## Team Name Matrix

Team Names is now even more powerful in Wilcom ES 2006 with the introduction of Team Name Matrix. This new feature is perfect for emblem and badge-based embroidery. Automatically creating a matrix of names together with a corresponding design, Team Name Matrix eliminates multiple color changes and manual frame movements on the machine. This time-saving feature will automatically reduce the number of color changes required, and position designs to ensure they fit within your machine's frame size.

Team Name Matrix will potentially save you hours of machine sewing time!



## More than just straight lettering

Create dazzling effects easily and quickly with Creative Baselines. Curve lettering to wrap around your design or shape it around a circle, arc, or any digitized shape.

Wilcom ES' intelligent, object-based embroidery always allows for complete editing of any lettering object.

### HEAD OFFICE

Wilcom International Pty Ltd – Head Office  
146 Wyndham Street,  
Alexandria NSW 2015 AUSTRALIA  
Tel: 61 2 9578 5100  
Fax: 61 2 9578 5108  
Email: wilcom@wilcom.com.au

### Americas

Wilcom America Inc  
Tel: + 1 770-409-9503  
Sales Toll-free: 1 877 657 7500  
Fax: + 1 770-409-9545  
Email: sales@wilcomamerica.com

### Europe

Wilcom Europe LTD  
Tel: 44 (0) 1246 455 667  
Fax: 44 (0) 1246 455 166  
Email: wilcom@wilcom.co.uk

For your closest Wilcom distributor visit [www.wilcom.com.au](http://www.wilcom.com.au)  
Support: [www.wilcom.com.au/support/](http://www.wilcom.com.au/support/)

